



NovaJet® 850

the power to innov8



Introducing the NovaJet 850, the first wide-format printer to offer three versatile personalities in one brilliant printer.

Features & Benefits

illumin8

- Octachrome ink sets dramatically improve smoothness and expand the color gamut
- MicroBurst™ Technology provides the ultimate in dot shape and accuracy
- Self-adjusting Jet Monitoring System monitors performance and extends carriage life
- High resolution 600 dpi output

integr8

- Stores two ink sets at the same time for fast and easy switching
- Eight 500 ml ink reservoirs provide days of operation and can be refilled while printing
- Pre-primed cartridge system easily snaps in for fast troubleshooting and replacement
- Media tracking system monitors usage and eliminates waste

acceler8

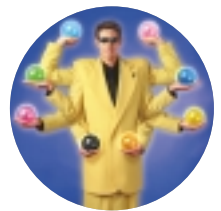
- V8 print engine with floating carriage design increases speed without banding
- 12 ink lines make it easy to switch between speed-enhancing and resolution-enhancing modes
- User-defined print modes let you adapt quickly to varied requirements
- Integrated 10/100base-T networking supports high-speed printing modes
- DTD System produces usable prints faster than other printers in the industry
- Optically-controlled take-up system automatically rolls up finished prints for later retrieval

ENCAD's proprietary Octachrome™ ink sets combine a unique set of four new colors with ENCAD's existing four-color process inks. The NovaJet 850's eight-color performance produces incredible color gamut and smooth tonal gradations that far exceed that of standard six-color printers.

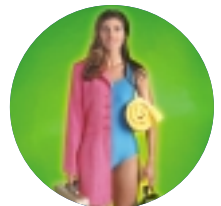
The NovaJet 850 offers unparalleled flexibility and versatility. With the ability to keep two ink sets installed at the same time, the NovaJet 850 makes it easy to switch from indoor graphics to archival photos to outdoor signs at the touch of a button. Twelve ink lines are loaded and primed, so you can instantly switch inks without having to change or handle them.

Producing more quality prints per day makes your company more profitable. The NovaJet 850 provides 2 x 4 printing for super fast four-color process printing or 1 x 8 printing for ultra-high quality imaging. The Dynamic Thermal Drying System™ accelerates your workflow by providing high-speed, uniform drying, so prints are ready to use or laminate sooner. The V8 print engine offers a torque-free floating carriage assembly, designed to run faster without vibration or banding.

Every feature of the NovaJet 850 is designed to give you the power to do more – and do it better, easier, faster. Contact us today or visit our website to find out how to put the NovaJet 850 and the Power of 8™ to work for you.



THE COLOR WIZARD™
Industry-leading Octachrome printing for unmatched photographic print quality.



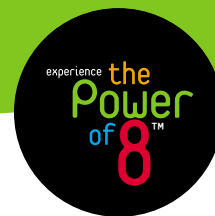
THE QUICK CHANGE ARTIST™
Hold two different ink sets and switch between them instantly.



THE SPEED DEMON™
Delivers super fast printing and drying to maximize throughput and profits.



NovaJet® 850 Specifications



Print Technology	On-demand thermal inkjet MicroBurst inkjet technology
Ink Delivery System	NovaJet continuous ink system Dual ink system
Ink Compatibility	GS PLUS, GX, and GO (600 dpi)
Cartridge Warranty	Cartridges are warranted for 500 ml of ink throughput
Cartridge Management	Assures the highest quality and reliable productivity through the useful life of the cartridge, which may extend beyond the cartridge warranty period. In order to ensure the quality of output, the cartridges will shut off after 1280 ml of ink throughput.
Media Compatibility	Compatible with a wide variety of ENCAD indoor and outdoor media
Media Handling	Standard automated media take-up & feeder system, on-board dryer, media cutter
Print Resolution	600 x 600 dpi
File Resolution	Accepts 600 x 600 dpi or 300 x 300 dpi files
Emulation	
<i>Raster</i>	EN-RTL, HP-RTL, HP/GL-2 Raster Merge
<i>Vector</i>	HP-GL/2
Interfaces	E-Connect 100base-T IEEE 1284 Bi-tronics ECP (Extended Capability Port) parallel
Processor	Power PC
Buffer	64 MB standard, expandable to 256 MB (1 DIMM slot)
Power Supply	Universal 90 to 246 VAC, 47 to 63 Hz
Power Consumption	Printer requires 20W idle, 185W typical, 285W maximum Dryer requires an additional 1200W
Noise	Standby: <50dBA Operational: <72dBA
Environment	
<i>Operating</i>	59° F to 95° F (15° C to 35° C) 10 to 70% RH non-condensing
<i>Storage</i>	-5° F to 140° F (-21° C to 60° C) 10 to 70% RH non-condensing
Drivers	ENCAD file print utility, AutoCAD ADI Rel. 12, 13, & 14 (Windows 3.x/95/NT)
Certification	UL, FCC, CSA, TUV, CE Mark International Safe Transit Association

Standard Print Speeds At 600 dpi

Mode	Pass	Speed
1 x 8 Production mode	2 Pass	81 sfph (7.5 smph)
1 x 8 Photo mode	4 Pass	62 sfph (5.8 smph)
1 x 8 Enhanced mode	6 Pass	41 sfph (3.8 smph)
1 x 4 Production mode	2 Pass	97 sfph (9.0 smph)
1 x 4 Photo mode	4 Pass	71 sfph (6.6 smph)
1 x 4 Enhanced mode	6 Pass	47 sfph (4.4 smph)
2 x 4 Production mode	2/4 Pass	132 sfph (12.4 smph)
2 x 4 Photo mode	3/6 Pass	83 sfph (7.7 smph)
2 x 4 Enhanced mode	4/8 Pass	62 sfph (5.8 smph)

Standard Accessories

- Eight inkjet cartridges: cyan, magenta, yellow, black • Eight 500 ml bottles: cyan, magenta, yellow, black • Three sets of four ink reservoirs
- Priming kit • Dynamic Thermal Drying System (DTD System)
- E-Connect 100base-T Print Server • Sample roll of media
- User Guide (CD ROM) • QuickStart Guide (manual & CD ROM)
- Software drivers (CD ROM) • Sample print images (CD ROM)

Dimensions	42" wide model	60" wide model
<i>Height</i>	44" (112 cm)	44" (112 cm)
<i>Width</i>	93" (237 cm)	111" (282 cm)
<i>Depth</i>	28" (71 cm)	28" (71 cm)

Weight

<i>Assembled</i>	150 lbs (68.2 kg)	165 lbs (75 kg)
<i>Shipping head</i>	127 lbs (58 kg)	140 lbs (64 kg)
<i>Shipping stand</i>	75 lbs (34 kg)	80 lbs (36 kg)

Media Specifications	42" wide model	60" wide model
<i>Sheet Size*</i>	Std. engineering architecture & ISO cut sheet above 11" (128 cm), max 42" (108 cm)	
<i>Roll Size Width</i>	24" to 42" (61 cm to 108 cm)	24" to 60" (61 cm to 152 cm)
<i>Max External Diameter</i>	6" (15 cm)	6" (15 cm)
<i>Core Diameter</i>	2"/3" (5 cm/ 7.6 cm)	2"/3" (5 cm/ 7.6 cm)
<i>Maximum Weight</i>	60 lbs (27 kg)	60 lbs (27 kg)

Print Margin	Within 0.20" (5 mm) of each edge, except for cut sheet*
---------------------	--

Language options	English, French, German, Spanish, Italian, Portuguese, Chinese, Korean, Japanese
-------------------------	---

Warranty	One year on-site. Extended plan available.
-----------------	--

Ordering Information	Part Number
42" (108 cm) NovaJet 850	214369-00
60" (152 cm) NovaJet 850	214368-00

* See owners manual for special handling instructions.

Specifications are subject to change without notice. Please contact your local authorized ENCAD reseller, or ENCAD, Inc.

ENCAD, Inc. USA

6059 Cornerstone Court West
San Diego, CA 92121-3734
Tel: 1-800-45-ENCAD
Tel: 1-858-452-0882
Fax: 1-858-452-0891

ENCAD, Europe S.A.

84/88 Blvd de la Mission Marchand
92400 Courbevoie France
Tel: +33-1-41-99-92-30
Fax: +33-1-41-99-92-40

ENCAD GmbH

Alte Landstrasse 21
D-85521 Ottobrunn, Germany
Tel: +49-89-660390-3
Fax: +49-89-660390-43

ENCAD, Ltd.


Vinertree House
Back Street
Wendover, Buckinghamshire
United Kingdom HP22 6EB
Tel: +44-1296-622222
Fax: +44-1296-622226

ENCAD ASIA

1901 Chinachem Leighton Plaza
29 Leighton Road
Causeway Bay, Hong Kong
Tel: +852-2881-8969
Fax: +852-2881-0912

PN 216260-00

©2000 ENCAD, Inc. ENCAD, NovaJet, MicroBurst, DTD System, Dynamic Thermal Drying System, OIS, Quality Imaging Supplies, Octachrome, GS PLUS, Graphic Standard PLUS, GX, Graphic Extend, GO, Graphic Outdoor, The Power of 8, The Color Wizard, The Quick Change Artist, and The Speed Demon are trademarks of ENCAD, Inc. All other trademarks are the property of their respective owners.

 Specified and printed on Zanders Ikono Dull Satin

ENCAD
www.encad.com